

Piano

# 927 - Sweetly Broken

JEREMY RIDDLE

JEREMY RIDDLE

*Arranged by Lura Foster*

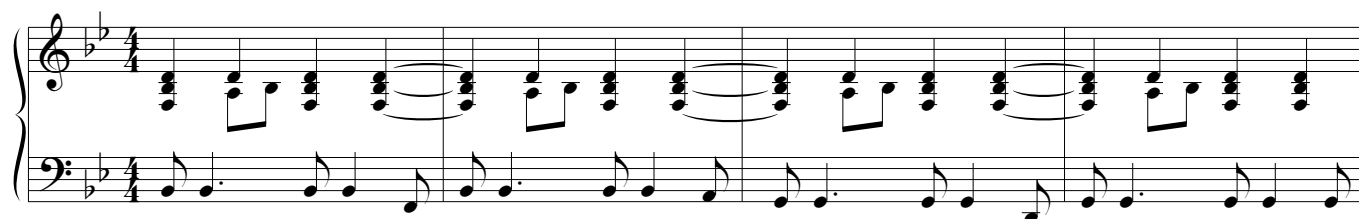
*Piano arranged by Carol Tornquist*

♩ = 95

INTRO

B $\flat$

G m<sup>7</sup>

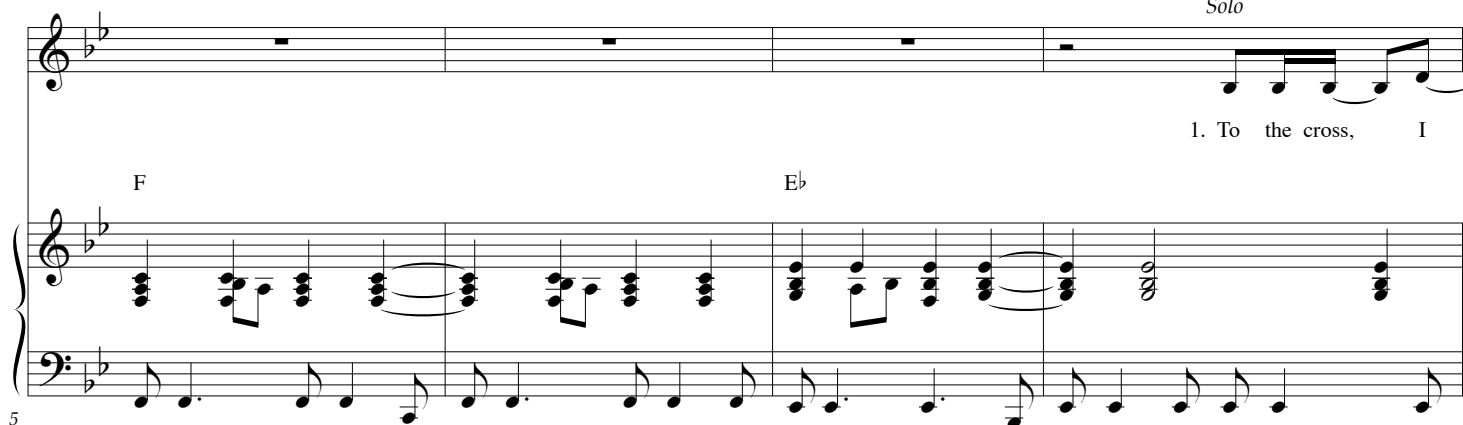


Solo

1. To the cross, I

F

E $\flat$

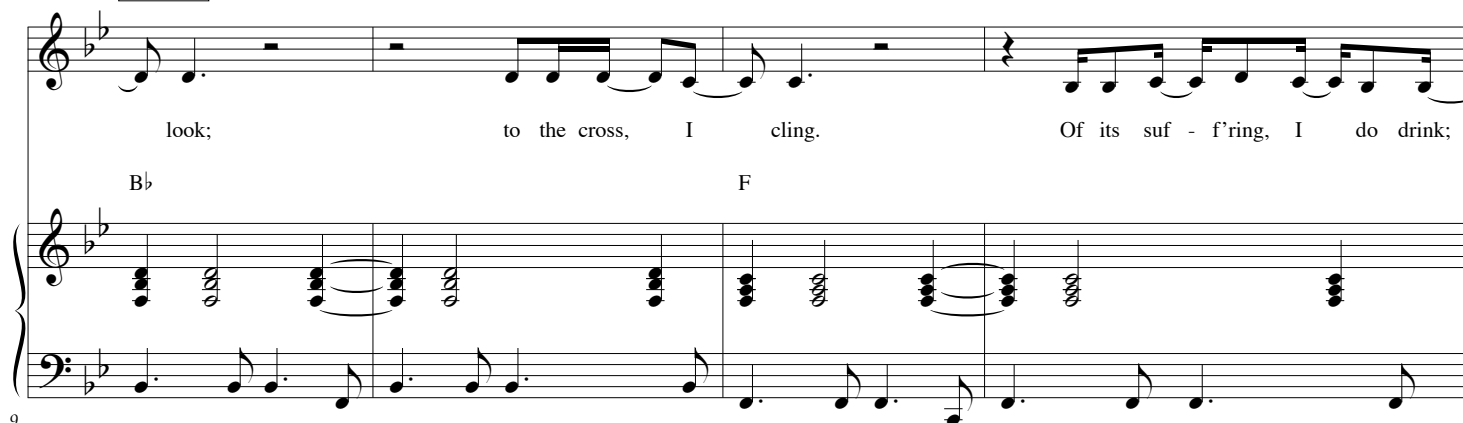


VERSE

look; to the cross, I cling. Of its suf - f'ring, I do drink;

B $\flat$

F



927 - Sweetly Broken - Piano - 2 of 8

13

of its work, I do sing. On it, my Sav -

Gm Eb

17

- ior, both bruised and crushed, showed that God is love

Bb F

21

and God is just.

Gm<sup>7</sup> Eb

927 - Sweetly Broken - Piano - 3 of 8

§ CHORUS

*All*

At the cross, You beck on me, draw me gent - ly to my knees, and I am

§

B $\flat$  B $\flat$ sus B $\flat$  B $\flat$ sus B $\flat$  Gm<sup>7</sup> C $\flat$ m Gm<sup>7</sup> C $\flat$ m Gm<sup>7</sup>

25

*Last time to Coda* ☺

lost for words, so lost in love. I am sweet-ly bro - ken, whol-ly sur-ren - dered.

F E $\flat$  *Last time to Coda* ☺

29

B $\flat$  Gm<sup>7</sup>

33

*Solo*

2. What a price - less

F E $\flat$

37

**VERSE**

gift, un - de - served life, have I been giv -

B $\flat$  F

41

*All*

- en through Christ cru - ci - fied. You called me out of death,

Gm E $\flat$

45

49

You called me in - to life. I was un - der Your wrath.

B $\flat$  F

*D.S. al Coda*

53

Now, through the cross, I'm rec - on - ciled.

Gm E $\flat$  *D.S. al Coda*

⌘ CODA

BRIDGE

*Solo*

whol - ly sur - ren - dered. In awe of the cross, I must con - fess

⌘ CODA

E $\flat$

Cm

E $\flat$

57

61

how won - drous Your re - deem - ing love and how great

Cm

64

is Your faith - ful - ness.

Eb F

67

**CHORUS**

At the cross, You beck on me, draw me gent - ly to my knees, and I am

Bb Gm7

927 - Sweetly Broken - Piano - 7 of 8

lost for words, so lost in love. I am sweet-ly bro - ken, whol - ly sur - ren - dered.

*All*

F E $\flat$

71

CHORUS

At the cross, You beck on me, draw me gent - ly to my knees, and I am

B $\flat$  B $\flat$ sus B $\flat$  B $\flat$ sus B $\flat$  Gm<sup>7</sup> C $\flat$ m G Gm<sup>7</sup> C $\flat$ m G Gm<sup>7</sup>

75

lost for words, so lost in love. I am sweet-ly bro - ken, whol - ly sur - ren - dered.

F E $\flat$

79

## ENDING

Measures 83-85 of the piano accompaniment. The key signature has two flats (Bb and Eb). Measure 83 features a Bb chord in the right hand and a single note in the left hand. Measures 84 and 85 feature a Gm7 chord in the right hand and a single note in the left hand. The notation includes various note values and rests.

Measures 86-88 of the piano accompaniment. The key signature has two flats (Bb and Eb). Measure 86 features an F chord in the right hand and a single note in the left hand. Measures 87 and 88 feature a Bb chord in the right hand and a single note in the left hand. The notation includes various note values and rests.

Measures 89-91 of the piano accompaniment. The key signature has two flats (Bb and Eb). Measure 89 features an Eb chord in the right hand and a single note in the left hand. Measures 90 and 91 feature a Bb chord in the right hand and a single note in the left hand. The notation includes various note values and rests.

*Solo*

I'm sweet - ly bro - ken.