

Piano

959 - Wholly Yours

DAVID CROWDER

DAVID CROWDER

Arranged by David Shipps

Piano arranged by Carol Tornquist

♩ = 77

INTRO

Chords: G, G/B, C², G, G/B, C²

mf

VERSE

Solo

1. I am full of earth, You are heav-en's worth. I am stained with dirt, prone to de-prav-i-ty.

Chords: G, G/B, C², G, G/B, C²

You are ev-ry-thing that is bright and clean, The an-to-nym of me.

Chords: G, G/B, C², G, G/B

You are di-vin-i-ty. But a cer-tain sign of grace is this:

Chords: C², G/B, C, G, D/F#

959 - Wholly Yours - Piano - 2 of 6

from the bro - ken earth, flow - ers come up, push - ing through the dirt. And You are ho -

Parts

mel.

G/B C G D/F# D

15

CHORUS

- ly, ho - ly, ho - ly. All heav - en cries, "Ho - ly, ho - ly God."

C G D G/B C G

18

You are ho - ly, ho - ly, ho - ly. I want to be ho -

D C G D G/B

21

959 - Wholly Yours - Piano - 3 of 6

2nd time to Coda ☸

- ly like You are.

C G D 2nd time to Coda ☸ G $\frac{GM^7}{B}$ C²

24

VERSE

Solo

2. You are ev - 'ry - thing that is bright and clean. And You're cov - er - ing

G $\frac{G}{B}$ C² G $\frac{G}{B}$

mf

28

Parts *Solo*

me with Your maj - es - ty. And the tru - est sign of grace was this:

C² $\frac{G}{B}$ C G D $F\sharp$

31

959 - Wholly Yours - Piano - 4 of 6

D.S. al Coda

Parts



from the wound - ed hands, re - demp-tion fell down lib-er - at - ing man. You are ho -

mel.



G
B

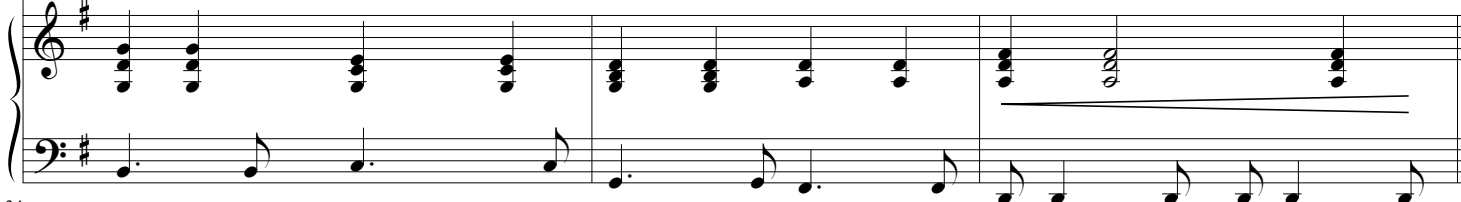
C

G

D
F#

D

D.S. al Coda



34

BRIDGE

⊕ CODA

Solo



But the hard - er I try, the more clear - ly can I feel the depth of our fall,

⊕ CODA

F

C

G



37

Parts



and the weight of it all. And so this might could be the most im - pos - si - ble thing:

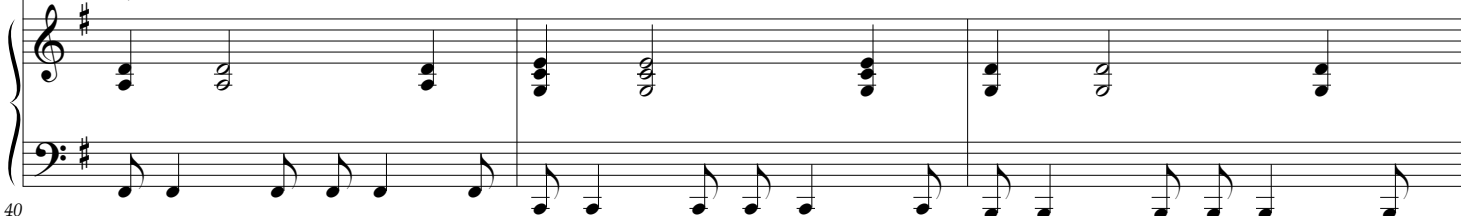
mel.



D
F#

C

G
B



40

43

Your grand-ness in me, mak-ing me clean. Glo-ry, hal-

G D F# CM⁷ G

46

- le-lu-jah. Glo-ry, glo-ry, hal-le-lu-jah. You are ho-

D CM⁷ G D

CHORUS

49

- ly, ho-ly, ho-ly. All heav-en cries, "Ho-ly, ho-ly God." You are ho-

C G D G/B C G D

959 - Wholly Yours - Piano - 6 of 6

53

ly, ho - ly, ho - ly. I want to be ho - ly like You are.

C G D $\frac{G}{B}$ C G D

57

ENDING

Solo

Whol - ly Yours. Yeah, I'm whol - ly Yours.

G $\frac{G}{B}$ C² G $\frac{G}{B}$

mf *decresc. to end*

60

Whol - ly yours.

C² G $\frac{G}{B}$ C² G