

Piano

# 100 - Hallelujah (Your Love Is Amazing)

BRENTON BROWN and BRIAN DOERKSEN

BRENTON BROWN and BRIAN DOERKSEN

Arranged by David Shipp

Piano arranged by Carl Seal

♩ = 98

INTRO

Both X - Solo  
opt. ad lib.

*mf*

Musical score for the Intro of 'Hallelujah (Your Love Is Amazing)'. The score is in 4/4 time with a key signature of one sharp (F#). It features a piano introduction with a melody in the right hand and a bass line in the left hand. The melody starts with a whole rest, followed by a half note G4, a quarter note A4, and a half note B4. The bass line consists of a whole note G3. The score includes dynamic markings *mp* and *mf*, and a crescendo hairpin. Chord symbols G/B, C<sup>2</sup>, D sus, and C<sup>2</sup> are indicated above the staff. The piece concludes with a final chord of G/B.

1. Your love is a - maz -  
(2. Your love is sur - pris) -

VERSE

Musical score for the Verse of 'Hallelujah (Your Love Is Amazing)'. The score is in 4/4 time with a key signature of one sharp (F#). It features a piano accompaniment with a melody in the right hand and a bass line in the left hand. The melody includes lyrics: 'ing, stead - y and un - chang - ing; Your love is a moun - tain, firm be - neath my feet. ing, I can feel it ris - ing, all the joy that's grow - ing deep in - side of me.' The score includes dynamic markings *mp - mf* and *mf*. Chord symbols G/B, C<sup>2</sup>, and D sus are indicated above the staff. The piece concludes with a final chord of G/B.

5

Musical score for the Verse of 'Hallelujah (Your Love Is Amazing)'. The score is in 4/4 time with a key signature of one sharp (F#). It features a piano accompaniment with a melody in the right hand and a bass line in the left hand. The melody includes lyrics: 'Your love is a mys - t'ry, how You gen - tly lift me; When I am sur - round - Ev - 'ry time I see You, all Your good - ness shines through. I can feel this God'. The score includes dynamic markings *mp - mf* and *mf*. Chord symbols C<sup>2</sup> and G/B are indicated above the staff. The piece concludes with a final chord of G/B.

8

# 100 - Hallelujah (Your Love Is Amazing) - Piano - 2 of 5

Both X - Parts

CHORUS

ed, Your love car - ries me. Hal - le - lu - jah, hal - le - lu -  
song ris - ing up in me.

D sus C<sup>2</sup> G

mf

11

- jah, hal - le - lu - jah! Your love makes me sing. Hal - le - lu -

D sus Em<sup>7</sup> C<sup>2</sup>

14

- jah, hal - le - lu - jah, hal - le - lu - jah!

G D sus Em<sup>7</sup>

17

# 100 - Hallelujah (Your Love Is Amazing) - Piano - 3 of 5

REPEAT to Verse *Solo* to Chorus

Your love makes me sing. Your love is sur-pris - Your love makes me sing. Hal-le-lu -

REPEAT to Verse *C<sup>2</sup>* to Chorus *C<sup>2</sup>*

20

## CHORUS

- jah, hal-le-lu - jah, hal-le-lu - jah! Your love makes me sing. Hal-le-lu -

*G* *D sus* *Em<sup>7</sup>* *C<sup>2</sup>*

*mf*

23

- jah, hal-le-lu - jah, hal-le-lu - jah! Your love makes me sing.

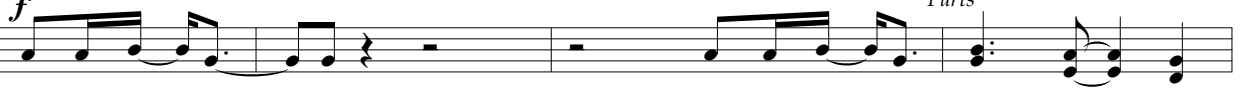
*G* *D sus* *Em<sup>7</sup>* *C<sup>2</sup>*

27

# 100 - Hallelujah (Your Love Is Amazing) - Piano - 4 of 5

## BRIDGE

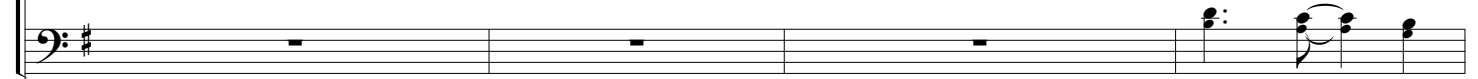
*Solo*



Yes, You make me sing.

Lord, You make me sing, sing, sing.

*Parts*

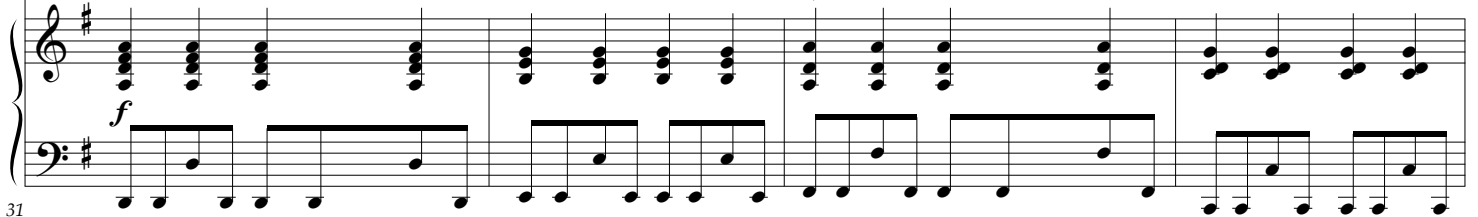


D

Em<sup>7</sup>

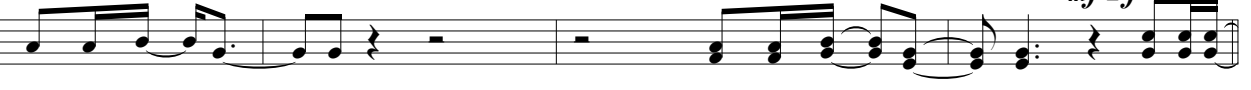
D  
F#

C<sup>2</sup>



31

*Solo*



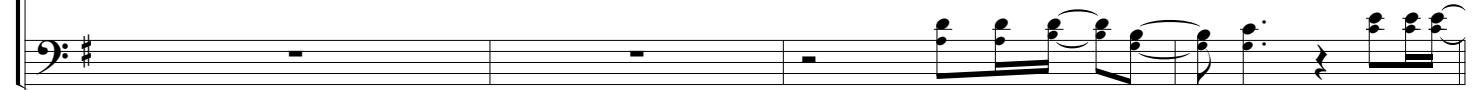
How You make me sing.

Lord, You make me sing. Hal-le-lu-

*Parts*

1st X - Solo  
2nd X - Parts

*mf-f*

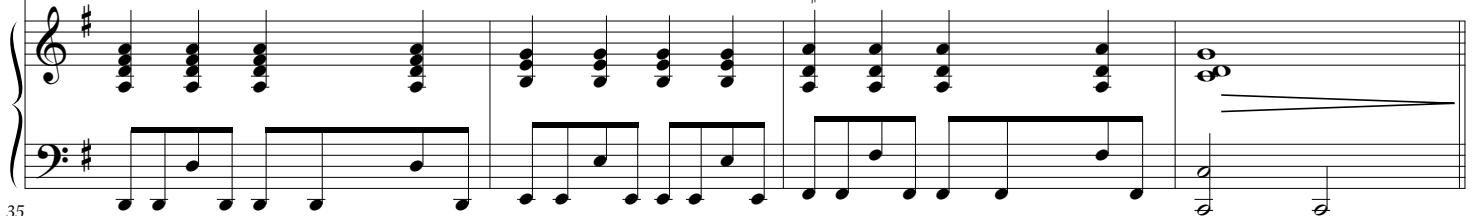


D

Em<sup>7</sup>

D  
F#

C<sup>2</sup>



35

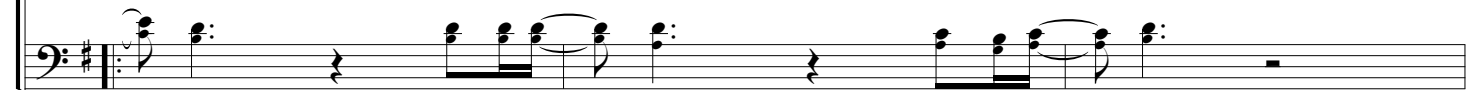
## CHORUS



- jah,

hal - le - lu - jah,

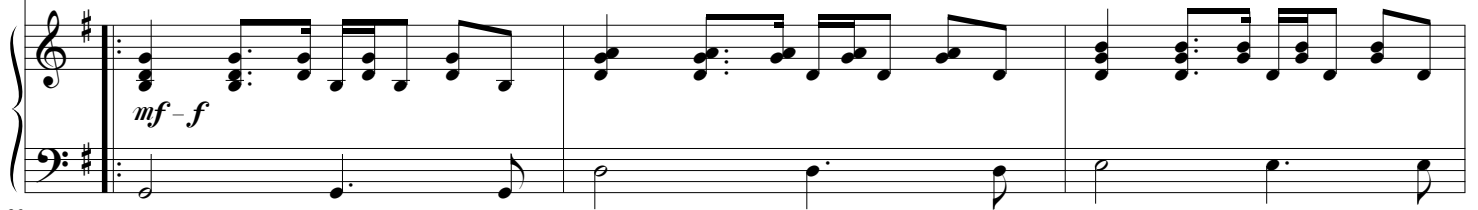
hal - le - lu - jah!



G

D sus

Em<sup>7</sup>



39

# 100 - Hallelujah (Your Love Is Amazing) - Piano - 5 of 5

42

42

45

45

48

48