

# The Lighthouse

Words and Music by  
Ronnie Hinson

♩ = 72



1. There's a light-house \_\_\_\_\_ on the hill - side that o - ver - looks life's  
2. Ev - 'ry - bod - y \_\_\_\_\_ that lives a - bout us says, tear that light-house



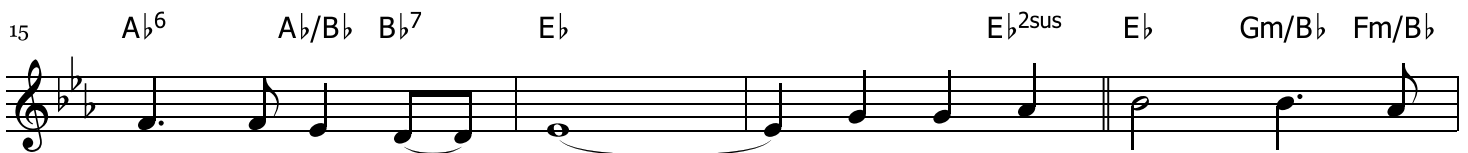
sea. When I'm tossed \_\_\_\_\_ it \_\_\_\_\_ sends out a light,  
down, the \_\_\_\_\_ big ships \_\_\_\_\_ don't sail this way an - y - more, there's no



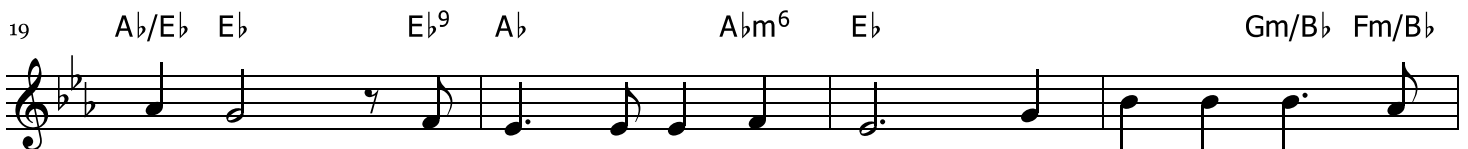
that I might see; And the light that shines \_\_\_\_\_ in dark - ness, now will  
use of it stand - ing 'round; Then my mind goes back to that storm - y night, when



safe - ly lead us o'er. \_\_\_\_\_ If it was - n't for the light - house, my  
just in time I saw the light, yes, the light from that old light - house that



ship would be no \_\_\_\_\_ more. \_\_\_\_\_ And I thank God for the  
stands up there on the hill. \_\_\_\_\_ And I thank



light-house; I owe my life to Him. For Je - sus is the

23      A $\flat$ /E $\flat$  E $\flat$       F $^9$       B $\flat$       E $\flat$  B $\flat$  $^7$  $^{sus}$ /E $\flat$       E $\flat$       Gm/B $\flat$  Fm/B $\flat$

light-house,      and from the rocks of sin      He has shone a light a -

27  $A\flat/E\flat$   $E\flat$   $E\flat^9$   $A\flat$   $A\flat m^6$   $E\flat$   $B\flat^{7sus}/E\flat$   $E\flat$

-round me that I could clear - ly see. If it was - n't for the

31  $B\flat 7^{sus}/E\flat$   $E\flat$  N.C.  $B\flat 7$   $B\flat 7^{sus}$   $B\flat 7$   $E\flat$

light - house, (tell me,) where would this ship be? \_\_\_\_\_